

# Mouse TREM2 Protein

Cat. No. TRM-MM101

## Description

<b>Source</b>	Recombinant Mouse TREM2 Protein is expressed from HEK293 with His tag at the C-Terminus. It contains Leu19-Ser171.
<b>Accession</b>	Q99NH8-1
<b>Molecular Weight</b>	The protein has a predicted MW of 17.9 kDa. Due to glycosylation, the protein migrates to 35-45 kDa based on Tris-Bis PAGE result.
<b>Endotoxin</b>	Less than 1EU per ug by the LAL method.
<b>Purity</b>	> 95% as determined by Tris-Bis PAGE

## Formulation and Storage

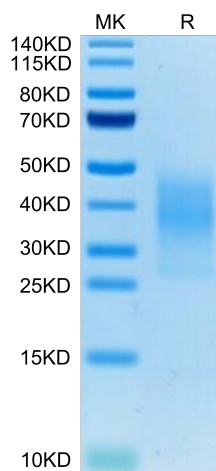
<b>Formulation</b>	Lyophilized from 0.22µm filtered solution in PBS (pH 7.4). Normally 8% trehalose is added as protectant before lyophilization.
<b>Reconstitution</b>	Centrifuge the tube before opening. Reconstituting to a concentration more than 100 µg/ml is recommended. Dissolve the lyophilized protein in distilled water.
<b>Storage</b>	-20 to -80°C for 12 months as supplied from date of receipt. -20 to -80°C for 3-6 months in unopened state after reconstitution. 2-8°C for 2-7 days after reconstitution. Recommend to aliquot the protein into smaller quantities for optimal storage. Please minimize freeze-thaw cycles.

## Background

TREM-2 (Triggering Receptor Expressed on Myeloid cells-2) is a 35 kDa type I transmembrane member of the TREM family and Ig superfamily. Mature human TREM-2 consists of a 156 amino acid (aa) extracellular domain (ECD) with one V-type Ig-like domain, a 21 aa transmembrane (TM) domain, and a 35 aa cytoplasmic tail. TREM-2 forms a receptor signaling complex with TYROBP which mediates signaling and cell activation following ligand binding (PubMed:10799849). Acts as a receptor for amyloid-beta protein 42, a cleavage product of the amyloid-beta precursor protein APP, and mediates its uptake and degradation by microglia.

## Assay Data

### Tris-Bis PAGE



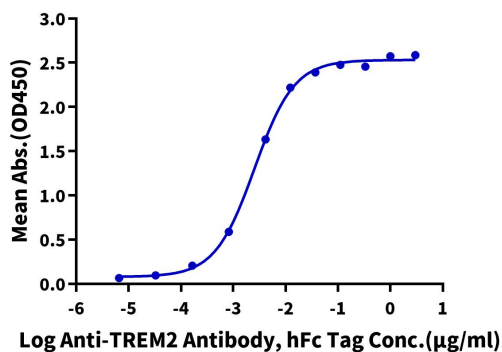
Mouse TREM2 on Tris-Bis PAGE under reduced condition. The purity is greater than 95%.

### ELISA Data

Assay Data

**Mouse TREM2, His Tag ELISA**

0.1µg Mouse TREM2, His Tag Per Well



Immobilized Mouse TREM2, His Tag at 1µg/ml (100µl/well) on the plate. Dose response curve for Anti-TREM2 Antibody, hFc Tag with the EC50 of 2.5ng/ml determined by ELISA.